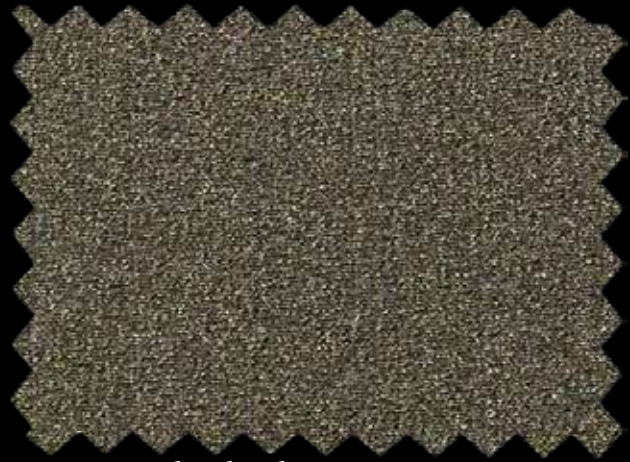


N132 ORION REC



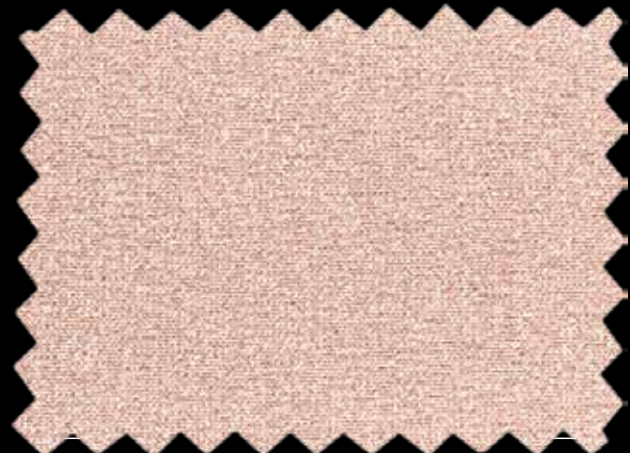
2319 black



9917 dark olive



1410 white - 1910 white PFP



2518 champagne

NEW ARTICLE



N132 **ORION REC**



CU1004128GRS-2023-00035481



shiny



high chlorine resistance



UV protection



two way stretch



comfort fit



printable


N132 ORION REC

Applications

> Swimwear > Underwear > Dancewear

Our Shiny brightest collection now sparkles even more and goes GREEN with Orion Rec, the brand new version of the classic trendiest article of our collections. Bright shiny colors, unchanged performances and good compression. The perfect choice for glamorous swimwear.



Composition					
Recycled Polyamide			Elastane		
80%			20%		
Weight ($\pm 5\%$)			Width ($+3\%/-2\%$)		
190 g/m²		285 g/m lin.	150 cm		
Courses		Wales	Tolerance for composition (standard ASTM)		
46/cm		26/cm	$\pm 3\%$		
Dimensional Change of fabric after HL AATCC 135-2015 (1 wash, normal cycle at 41 degree Celsius line dry)			Max	Max	
			-5%	-5%	
			Width	Length	
Resistance to pilling ASTM D 3512-Random tumble at 30 minutes photographic rating STD			4 to 4.5		
Ultraviolet Protection Factor (U.P.F.) AATCC 183-2010			50+		
Stretch to dynamometer ($\pm 15\%$) ASTM D 4964 - LOAD 20 LBS			110%	195%	
			Width	Length	
			(min 94% - max 127%)	(min 166% - max 224%)	
Modulus % elongation (30% - 50% - 70%)			30%	50%	70%
			0.3-0.8	0.9-1.8	1.9-3.6
			Width Lbs	Length Lbs	
Care labelling codes					

AATCC Standards

COLOUR	CHLORINATED WATER AATCC 162	LIGHT AATCC 16-20 AFU	WATER 38°C AATCC 107							SEA WATER 38°C AATCC 106							PERSPIRATION AATCC 15							CROCKING AATCC 8		WASHING 49°C AATCC 61-2A						
	C.C.	C.C.	C.C.	AC	CO	PA	PL	PC	WO	C.C.	AC	CO	PA	PL	PC	WO	C.C.	AC	CO	PA	PL	PC	WO	S.CO DRY	S.CO WET	C.C.	AC	CO	PA	PL	PC	WO
1410 - 1910	3	3	4.5	5	5	5	5	5	5	4.5	5	5	5	5	5	5	4.5	5	5	5	5	5	5	5	5	4.5	5	5	5	5	5	5
9917	4.5	4.5	4.5	4	4	3.5	4	4	3.5	4.5	4.5	4	3.5	4	4	4	4.5	4.5	4.5	4	4.5	4.5	4.5	4	3.5	4.5	4.5	4.5	3.5	4.5	4.5	4
2518	4	4.5	4.5	4.5	4.5	4.5	4.5	4.5	4.5	4.5	4.5	4.5	4.5	4.5	4.5	4.5	4.5	4.5	4.5	4.5	4.5	4.5	4.5	4.5	4.5	4.5	4.5	4.5	4.5	4.5	4.5	4.5
2319	4.5	4.5	4.5	4.5	4	4	4.5	4.5	4	4.5	4.5	4	4	4.5	4.5	4	4.5	4.5	4.5	4.5	4.5	4.5	4.5	4	3	4.5	4.5	4	3.5	4.5	4.5	4

ISO Standards

COLOUR	CHLORINATED WATER ISO 105-E03	LIGHT ISO 105-B02	WATER ISO 105-E01				SEA WATER ISO 105-E02			ALKALINE PERSPIRATION PH 8.0 ISO 105-E04			ACID PERSPIRATION PH 5.5 ISO 105-E04			CROCKING ISO 105-X12		WASHING 40°C ISO 105-C06 A2S		
	C.C. 50 mg/l	C.C.	C.C.	CO	PA	C.C.	CO	PA	C.C.	CO	PA	C.C.	CO	PA	S.CO DRY	S.CO WET	C.C.	CO	PA	
1410 - 1910	2-3	3	4-5	5	5	4-5	5	5	4-5	5	5	4-5	5	5	5	5	4-5	5	5	
9917	4	4-5	4-5	4-5	4	4-5	4-5	4	4-5	4-5	4	4-5	4-5	4	4	3-4	4-5	4-5	4	
2518	3	4-5	4-5	4-5	4-5	4-5	4-5	4-5	4-5	4-5	4-5	4-5	4-5	4-5	4-5	4-5	4-5	4-5	4-5	
2319	4-5	4-5	4-5	4-5	4	4-5	4-5	4	4-5	4-5	4	4-5	4-5	4	4	3	4-5	4-5	4	

Available colors: all colors displayed in the main **Shiny** color card are available for sampling on this item. Please refer to the main color card for the color fastness performance of each color. You can place bulk orders with MCQ 70 mts in any shade of our collection.

Special notes/warnings: we recommend carrying out lab tests for color matches, molding, bonding and applications on fabrics in order to prevent problems from arising during garments production. Please carefully check physical data and color fastness forecasts.